

It's time for a

BREAK THROUGH

The best is yet to come!

Updating our 2004 Church Faith Plan - 2015



WOODLANDS
CHURCH



OUR STORY SO FAR

In 2004 we developed our 'Woodlands Church Faith Plan'. In the plan we defined our Church *Vision* and *Purpose* as follows:

Our Vision

We see Woodlands as vibrant community on fire for the glory of God and the extension of His kingdom.

Our Purpose

A Community of Christ-like people conformed to His character and committed to His cause.

Recently, however we, as the Session, sensed that God was drawing us to revisit the plan and update it by clarifying our ongoing practical 'assignment' as a church (What we believe God is calling us to accomplish over the next five years). The following is a summary of what we believe God put on our hearts.

A 'NEW THING'

While we thank God for our many past blessing, we do sense that He is already at work among us doing 'a new thing'. 'Now it springs up' ... We are already perceiving the green shoots of His blessing! - We believe that God is calling us to lead our Woodlands people on a ***journey of spiritual breakthrough*** that will bring us to new heights with Him and even greater blessing.

'Forget the former things; do not dwell on the past. See, I am doing a new thing! Now it springs up; do you not perceive it?'

Isaiah 43:18-19

OUR JOURNEY PLAN

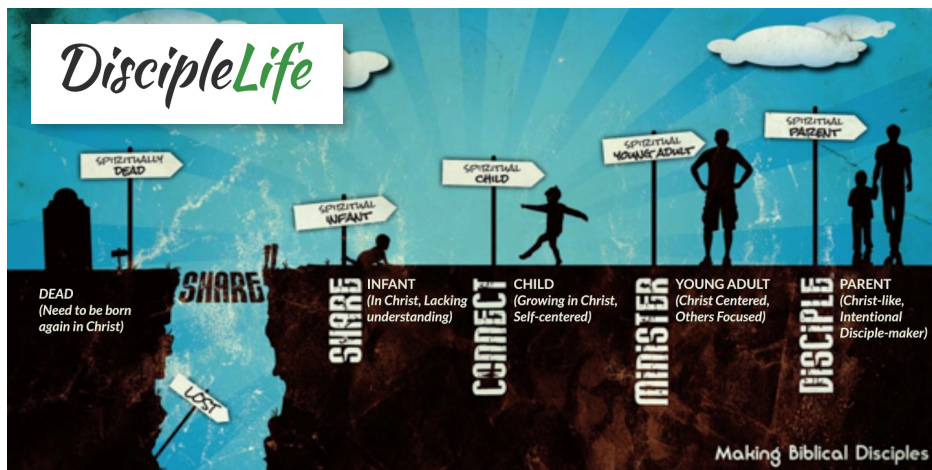
The Journey must be WITH HIM or not at all:

What we are proposing can only be done with God's enablement. We are entirely dependent on Him for any increase. Prayer must therefore be the atmosphere in which we travel. We will review and improve our church prayer ministries.

It is our prayerful expectation that in God's strength the journey will:

1. Take each of us to our full Kingdom-building potential

Our central purpose as a church (See earlier) is all about making disciples. We aim to radically improve our disciple-making processes by launching '***DiscipleLife***' equipping tracks. These tracks will be offered at the various maturity levels and age bands of our membership. Our initial plan is to pilot these tracks on Sunday evenings.



2. Align each of our 'Ministries' with our Disciple-making Purpose

We also recognise the crucial role that our various ministries/organisations have in disciple-making. We want to help them be as effective as possible in fulfilling this role.

3. Unleash all the Kingdom-building potential God has given us

'DiscipleLife' will also feature a 'Finding Your Spiritual Shape' Course which will be offered once per year. This will help each of us discover, develop and deploy our God-given spiritual gifts and abilities, and get connected to appropriate 'serving slots'. The principle is that disciples grow and find fulfilment only as they are active in the kind of Christian service which God has designed them for.

4. Provide all the Leadership we need to fulfil our Vision

Our leaders are our journey guides. As a Session we are very aware of the need for succession planning. Our plan therefore involves the raising up of adequate future leadership at all church levels. To this end:

- 'DiscipleLife' will also run a *leadership stream* aimed at finding and enabling our future leadership (at all church levels).
- We will also look at changing our *leadership structure* so we can involve emerging leaders at appropriate levels in leadership roles and so provide them appropriate leadership experience.
- We recognise also that in-service leaders need regular encouragement. We will seek to insure that all leaders will be adequately Briefed, Resourced, Trained and Supported.

5. Increase the ministry of encouragement among us

Ministering to one another is an essential part of growing together, yet many of us are reticent to ever share our needs. We will seek to develop a healthy 'ministry to one another culture' at Woodlands by offering prayer ministry after each service and encourage this ministry to be a normal part of our cell life.

6. Carry the practical love of God into our local community

God has been graciously sending us people who are burning with a heart for the local community around our church. We sense that through them, He is calling us to be more effective in reaching the lost and needy in our community. Therefore, working strategically alongside other evangelical churches and agencies, we intend to launch ministry teams focused on community needs. This initiative has already started... We are currently in the process of launching 'Potter's House' a ministry to those battling addiction.

IN CONCLUSION

We see Woodlands as an ever more beautiful loving community of maturing believers who will have a deeper understanding and appreciation of the grace of God, not just at the point they were saved, but in every day of their Christian walk. This will give them greater assurance and satisfaction in their relationship with God and will enable them to serve Him willingly out of joy over His goodness to them every day.

**'CONSIDER
YOUR WAYS'**

HAGGAI 1:7

This is a thrilling picture. It is 'our cause to live and die for', and we invite you to do just that. Several times in Haggai God's word came in a powerful challenge to the people ... "Consider your ways" God was graciously helping them recognise that His house needed building and that their past commitment level would just not be enough. He was 'stirring' their hearts for a response. As a Session we believe this exact same process is happening right now among us. How will you respond? Don't miss out - **We invite you to...Rise up and build!**

48 Burleigh Drive, Carrickfergus, BT38 8HW
T: (028) 9335 1698 **E:** office@woodlandschurch.co.uk
W: woodlandschurch.co.uk



/WoodlandsPC



@Woodlands_PC



**WOODLANDS
CHURCH**